



*challenging new frontiers  
a voyage beyond excellence*

# MP VANTAGE

## AHT / 5000 BHP / DP 1 / FIFI ½



| VESSEL INFORMATION |  |
|--------------------|--|
| Ownership          | Marco Polo Offshore Pte Ltd  |
| Flag               | Singapore  |
| Builder            | Sarawak Slipways Sdn Bhd, Malaysia   |
| Year Built         | 2008   |
| Call Sign          | 9V9140   |
| Official Number    | 396686   |
| IMO Number         | 9457074  |
| CLASS              | ABS  |
| Notations          | ⊛A1, Towing Vessel, Offshore Support Vessel, AH, (E),<br>⊛AMS, ⊛ABCU, ⊛DPS-1 |

| PRINCIPAL PARTICULARS                               |   | PROPULSION SYSTEM                             |   | DECK MACHINERY                |   |
|---|---|---|---|-------------------------------|---|
| Length Overall                                      | 50.0 m  | Main Engine                                   | 2 x Niigata 6L28HX,<br>2500BHP each   | Anchors                       | 2 x Bower Anchors,<br>1440kg each                           |
| Length (BP)   | 46.9 m  | Main Propulsion                               | 2 x Z-Peller, mono-block,<br>fixed pitch, 4 blade<br>rotating kort nozzles. | Chain Cables                  | 412.5m ø34mm, Gr.2  |
| Beam Moulded  | 13.8 m  | Bow Thruster                                  | 1 x HRP 4000, Retractable<br>Azimuth, Engine Driven, 8T<br>thrust.          | Windlass                      | 1 x 3.0T @ 14m/min.<br>(PLIMSOLL)                           |
| Depth Moulded                                       | 6.0 m   |   |   | Tugger Winch                  | 2 x 10 MT @ 15 m/min  |
| Draft (Design)                                      | 4.0 m   |   |   | Capstan                       | 2 x 5 MT @0-15 m/min  |
| Draft (Max)   | 4.8 m   |   |   | Deck Crane                    | 1 x knuckle boom<br>1.25t@6m, 3t@3m<br>outreach (HS MARINE) |
| Deadweight at max draft                             | 1028 MT   |   |   |                               |   |
| GRT/NRT   | 1179 / 353  | <b>GENERATORS</b>                             |   | <b>DP SYSTEM</b>              |   |
| Deck area   | 260 m <sup>2</sup>  | Main Genset                                   | 2 x Cummins QSM11D,<br>415V / 3ph / 50Hz, 245kw                             | DP-1 (Converteam)             |   |
| Deck Strength                                       | 7.5 MT per sq.m.  | Emergency Genset                              | 1 x 50kw 415V / 3ph / 50Hz  | <b>TANK CAPACITIES (100%)</b> |   |
| Deck Carrying Capacity                              | 300 MT minimum  | Electrical Sockets                            | 5 x 415V, 3ph, 50Hz, 32A<br>1 x 240V, 1ph, 50Hz, 32A                        | Fuel Oil                      | 671 m <sup>3</sup>  |
| <b>SPEED</b>  |   | <b>TOWING &amp; ANCHOR HANDLING EQUIPMENT</b> |   | Potable Water                 | 340 m <sup>3</sup>  |
| Service Speed                                       | 10.0 knots  | Forward Tow Winch                             | PLIMSOLL – Hydraulic  | Drill/FW/Ballast Water        | 309 m <sup>3</sup>  |
| Maximum Speed                                       | 12.0 knots  | Rated Pull (1st Layer)                        | Low Speed: 20T x 12m/min<br>High Speed: 6.0Tx34m/min                        | Lube Oil                      | 21.5 m <sup>3</sup>   |
| <b>BOLLARD PULL</b>                                 |   | Brake Holding                                 | 120T (static 1st layer)   | Hydraulic Oil                 | 6 m <sup>3</sup>  |
| Bollard Pull  | 70.54 MT  | Drum Cap.                                     | 500m x 56mm   | Foam Tank                     | 13.2 m <sup>3</sup>   |
| <b>ACCOMMODATION</b>                                |   | Towing/Anchor Handling Winch                  | PLIMSOLL electro-hydraulic<br>waterfall type double drum                    | Dispersant Tank               | 13.2 m <sup>3</sup>   |
| 2 x 1-berth cabins                                  | 2   | Rate Pull (1 <sup>st</sup> layer)             | 120 MT @ 5 m/min  | Bilge Holding Tank            | 8.1 m <sup>3</sup>  |
| 3 x 2-berth cabins                                  | 6   | Brake Holding                                 | 185 MT  | Dirty Oil Tank                | 8.1 m <sup>3</sup>  |
| 5 x 4-berth cabins                                  | 20  | Towing Drum Cap.                              | 1000m x ø56mm   | <b>PUMP CAPACITIES</b>        |   |
| Total:  | 28 (fully air-con)  | AH Drum Cap.                                  | 1000m x ø56mm   | Fuel Oil Pump                 | 1 x 100 m <sup>3</sup> /hr @75m                             |
| Complement  | 14  | Towing Pins                                   | 1 set x SWL 125 MT  | FW Cargo Pump                 | 1 x 80 m <sup>3</sup> /hr @75m                              |
| <b>LIFE SAVING EQUIPMENT</b>                        |   | Shark Jaw                                     | 1 set x Plimsoll Shark Jaws,<br>SWL 250 MT                                  | Bilge & Ballast Pump          | 1 x 50 m <sup>3</sup> /hr @55m                              |
| Inflatable liferaft                                 | 2 x 20 and 2 x 25-men                                     | Stern Roller                                  | L4.2m x ø1.6~1.8m, SWL<br>250MT   | GS & Fire Pump                | 1 x 50 m <sup>3</sup> /hr @55m                              |
| Rescue boat   | 1 x 6-men, c/w 40HP<br>outboard motor, davit-<br>launched |   |   | Detergent Pump                | 1 x 50 m <sup>3</sup> /hr @60m                              |
| <b>FIRE-FIGHTING &amp; ANTI-POLLUTION EQUIPMENT</b> |   |   |   | <b>MISCELLANEOUS</b>          |   |
| Fifi Class ½ with Water Spray                       |   |   |   | Oily Water Separator          | 1 x Taiko Kikai OWS<br>(Cap. 1 m <sup>3</sup> /hr)          |
| Pump  | 1 x 1500 m <sup>3</sup> /hr                               |   |   | Sewage Treatment Plant        | 1 x STP (Hamworthy<br>Super Trident ST3A)                   |
| Monitor   | 2 x 600 m <sup>3</sup> /hr, 12 bar,<br>110m               |   |   |                               |   |
| Oil Dispersant System                               | 2 x 6m spray boom<br>with nozzles                         |   |   |                               |   |

Particulars believed to be correct but not guaranteed. All figures given are approximate only. Owners reserve the right to amend the specifications without notice.

MARCO POLO MARINE LIMITED | 66 Kallang Pudding Road, Hor Kew Business Centre #05-01 Singapore 349324 | Tel: 6741-2545 Fax: 6659-4685 |

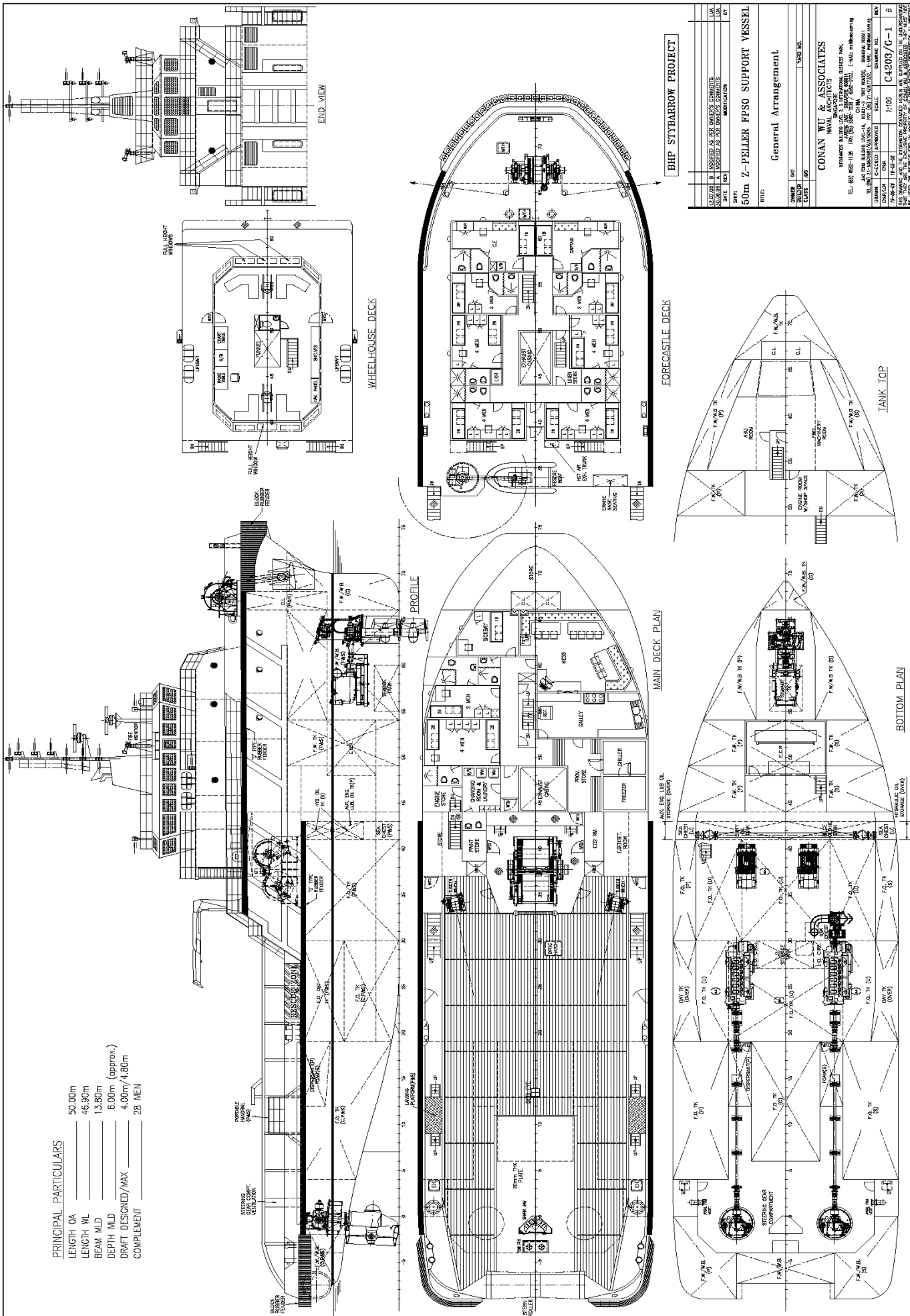
[www.marcopolomarine.com.sg](http://www.marcopolomarine.com.sg)

For enquiries: [ops.offshore@marcopolomarine.com.sg](mailto:ops.offshore@marcopolomarine.com.sg)

# GENERAL ARRANGEMENT

## PRINCIPAL PARTICULARS

|                    |                 |
|--------------------|-----------------|
| LENGTH OA          | 50.00m          |
| LENGTH WL          | 46.90m          |
| BEAM MLD           | 13.80m          |
| DEPTH MLD          | 6.00m (approx.) |
| DRAFT DESIGNED/MAX | 4.00m/4.80m     |
| COMPLEMENT         | 28 MEN          |



BHP STYBARROW PROJECT

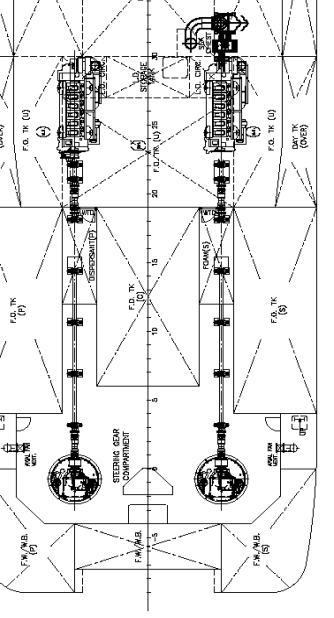
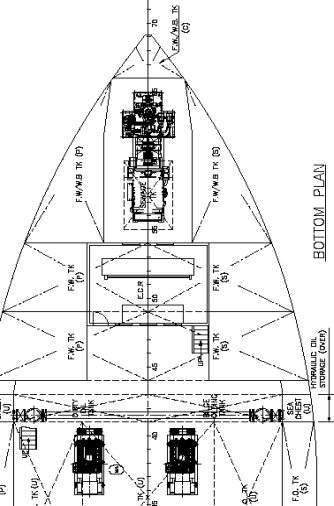
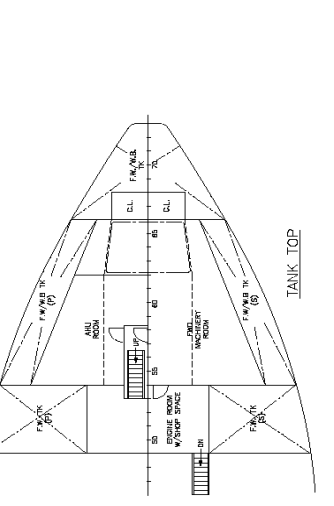
FORECASTLE DECK

MAIN DECK PLAN

SEA DIST. (OVER)

SEA DIST. (OVER)

|             |                                  |
|-------------|----------------------------------|
| DESIGNED BY | CONAN WILSON ASSOCIATES          |
| CHECKED BY  | CONAN WILSON ASSOCIATES          |
| DATE        | 12-08-08                         |
| SCALE       | 1:100                            |
| TITLE       | General Arrangement              |
| PROJECT     | 50m Z-Peller FPSO SUPPORT VESSEL |
| NO.         | C4203/G-1                        |
| REV.        | B                                |



THIS DRAWING AND THE INFORMATION CONTAINED HEREIN ARE HEREBY RELEASED TO THE PUBLIC ON THE UNDERSTANDING THAT THE INFORMATION CONTAINED HEREIN IS NOT TO BE REPRODUCED OR TRANSMITTED IN ANY FORM OR BY ANY MEANS, ELECTRONIC OR MECHANICAL, INCLUDING PHOTOCOPYING, RECORDING, OR BY ANY INFORMATION STORAGE AND RETRIEVAL SYSTEM.