



challenging new frontiers
a voyage beyond excellence

MP VALOUR

AHTS / 5400 BHP / DP1 / FIFI 1



VESSEL INFORMATION

Ownership	Marco Polo Offshore (II) Pte Ltd
Flag	Singapore
Builder	PT Marco Polo Shipyard - Batam
Year Built	2012
Call Sign	9V6530
Official Number	398097
IMO Number	9659969
CLASS	ABS
Notations	✱A1 (E), Towing Vessel, AH, Fire Fighting Vessel Class 1, Offshore Support Vessel, ✱AMS, ✱DPS-1

PRINCIPAL PARTICULARS		PROPULSION SYSTEM		DECK MACHINERY		
Length Overall	60.0 m	Main Engine	2 x MAK 6M25, 2700BHP @750 rpm each	Anchors	2 x HHP AC-14 anchors, 1590kg each	
Length (BP)	53.9 m	CPP	2 x Berg Propulsion, dia 2650 mm	Chain Cables	605m ø40mm, Gr.U2	
Beam Moulded	16.0 m	Bow Thruster	2 x Berg CPP tunnel thruster, 400KW, 6T	Windlass (McGregor Plimsoll)	1 set electro-hydraulic 10T @ 10m/min	
Depth Moulded	6.0 m	Rudder	2 x high-lift type (Becker)	Tugger Winch	2 x 15 MT @0-10 m/min	
Draft (Design)	4.8 m	Steering Gear	Ram type (Nufoss/Wagner)	Vert. Capstan	2 x 5 MT @15 m/min	
Draft (Max)	5.1 m	GENERATORS		Rope Reel	Cap.– 1000m x ø58mm Pull – 8T @ 15m/min	
Deadweight at max draft	1766 MT	Shaft Alternator	2 x 750KW, 440V, 3ph, 60Hz	Deck Crane	1 x electro-hydraulic, SWL 5 MT @8m	
GRT/NRT	1709 / 512	Main Genset	2 x CAT C18, each 340KW, 440V, 3ph, 60Hz	DP SYSTEM		
Deck area	360 m2	Emergency Genset	1 x CAT C4.4, 94KW, 440V, 3ph, 60Hz	DP-1 (Kongsberg)		
Deck Strength	5.5 MT per sq.m.	Electrical Sockets:	4 x 440V, 3ph, 60Hz, 32A	TANK CAPACITIES (100%)		
Deck Carrying Capacity	600 MT minimum	TOWING & ANCHOR HANDLING EQUIPMENT		Fuel Oil	546.5 m3	
SPEED		Towing/Anchor Handling Winch (McGregor Plimsoll)	1 set electro-hydraulic waterfall type double drum Brake Holding – 200 MT Line Pull –150MT@6m/min	Potable Water	326.2 m3	
Service Speed	10.5 knots	Towing Drum Cap.	1000m x ø58mm	Drill/FW/Ballast Water	574.4 m3	
Maximum Speed	14.0 knots	AH Drum Cap.	1000m x ø58mm	OBM/Base Oil	244.7 m3 (1539 bbls)	
BOLLARD PULL		Towing Pins (Triplex)	1 set x SWL 300 MT	Brine	244.7 (Mud) + 250.4 (Base Oil & DW Ballast Tanks) = 495.1 m3 (3114 bbls)	
Bollard Pull	69.2 MT	Shark Jaw	1 set Triplex Shark Jaws, SWL 200 MT	Dry Bulk Cargo Tanks	170 m3 (4 x 1500 cu.ft = 6000 cu.ft)	
ACCOMMODATION		Stern Roller	L3.5m x ø1.5m, SWL200MT	Foam tank	17.7 m3	
4 x 1-berth cabins	4	MISCELLANEOUS		Dispersant Tank	17.7 m3	
5 x 2-berth cabins	10	Oily Water Separator	1 x OWS (Cap. 1.2 m3/hr)	Bilge Holding tank	12.0 m3	
3 x 4-berth cabins	12	Sewage Treatment Plant	1 x STP (Cap. 25 persons)	PUMP CAPACITIES		
Total:	26 (fully air-con)	Water Maker	1 x 5 MT/day (reverse osmosis)	Cargo Fuel Oil Pump	1 x 100 m3/hr @75m	
Complement	14			Potable Water Pump	1 x 100 m3/hr @75m	
LIFE SAVING EQUIPMENT				Drill Water Pump	1 x 100 m3/hr @75m	
Inflatable liferaft	4 x 20-men			Liquid Mud/Base Oil Pump	2 x 60 m3/hr @75m	
Rescue boat	1 x 6-men rigid c/w 25HP OBM and single arm davit.			Dry Bulk Discharge Rate	60 m3/hr @60m	
FIRE-FIGHTING & ANTI-POLLUTION EQUIPMENT						
FiFi Class 1 with Water Spray						
Pump	2 x 1500 m3/hr					
Monitor	2 x 1200 m3/hr, 12 bar, 120m, remote cntrl.					
Oil Dispersant System	2 x 6m spray boom with nozzles					

Particulars believed to be correct but not guaranteed. All figures given are approximate only. Owners reserve the right to amend the specifications without notice.

MARCO POLO MARINE LIMITED | 66 Kallang Pudding Road, Hor Kew Business Centre #05-01 Singapore 349324 | Tel: 6741-2545 Fax: 6659-4685 |

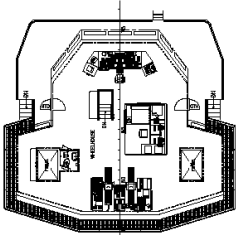
www.marcopolomarine.com.sg

For enquiries: ops.offshore@marcopolomarine.com.sg

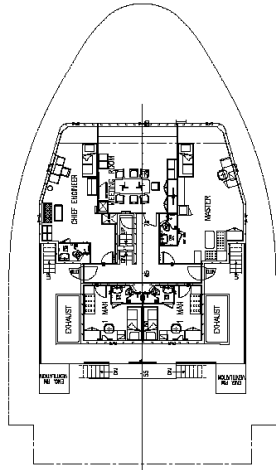
GENERAL ARRANGEMENT

PRINCIPAL PARTICULARS

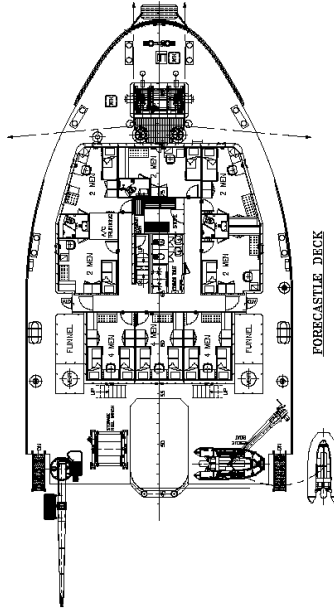
LENGTH O.A.	60.00m
LENGTH W.L.	58.70m
BEAM M.L.D.	16.00m
DEPTH M.L.D.	6.00m
DRAFT DESIGNED	5.10m
COMPLEMENT	25 MEN
POTABLE WATER	300m ³ (APPROX)
FUEL OIL	500m ³ (APPROX)
LIQUID MUD	235m ³ (APPROX)
BASE OIL/BRINE	250m ³ (APPROX)
DRILL WATER	400m ³ (APPROX)



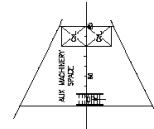
NAV. BRIDGE DECK



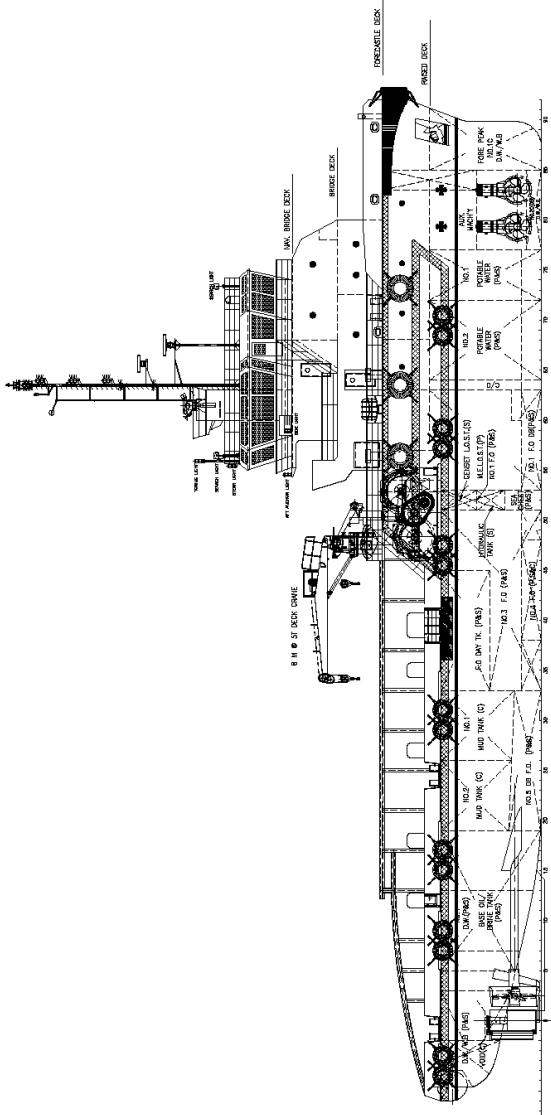
BRIDGE DECK



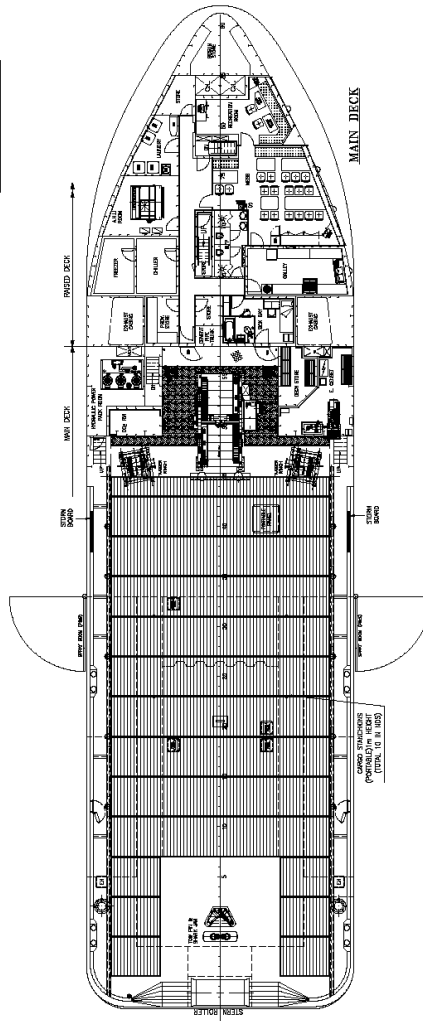
FORECASTLE DECK



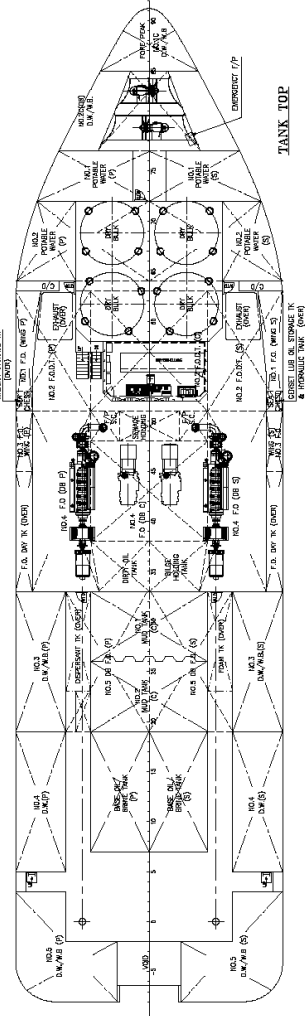
TWEEN DECK



OUTBOARD PROFILE



MAIN DECK



TANK TOP

DATE	22/2/12	ISSUED AS PER OWNER'S COMMENTS	1	ISSUAL
SHIP	60 M. ANCHOR HANDLING TUG/SUPPLY VESSEL			REV. BY
MODIFICATION				
GENERAL ARRANGEMENT				
OWNER	MARINE PILING (SINGAPORE) PTE. LTD.			YARD NO.
CLASS	ABS			039
WARTISLA SHIP DESIGN SINGAPORE PTE. LTD.				
DESIGN NO.	27/02/12	SCALE	1:150	40389-101-001
REV.	1	DATE	12/02/12	REV.
THE DRAWING AND ALL INFORMATION CONTAINED HEREIN ARE THE PROPERTY OF WARTISLA SHIP DESIGN SINGAPORE PTE. LTD. AND ARE NOT TO BE REPRODUCED OR TRANSMITTED IN ANY FORM OR BY ANY MEANS, ELECTRONIC OR MECHANICAL, INCLUDING PHOTOCOPYING, RECORDING, OR BY ANY INFORMATION STORAGE AND RETRIEVAL SYSTEM, WITHOUT THE WRITTEN PERMISSION OF WARTISLA SHIP DESIGN SINGAPORE PTE. LTD.				
SCALE	1:150			SCALE: 1/300