



*challenging new frontiers
a voyage beyond excellence*

MP SPECTRUM 40M Utility Vessel



VESSEL INFORMATION

Ownership	Marco Polo Offshore (II) Pte Ltd
Flag	Panama
Builder	P.T. Palindo Marine, Batam
Year Built	2009
Call Sign	H05814
Official Number	40356-PEXT-2
IMO Number	9556959
CLASS	ABS
Notations	✱A1, HSC, (Maximum Significant Wave Height 2M), Coastwise Service, (E), ✱AMS, CRC

PRINCIPAL PARTICULARS		PROPULSION SYSTEM		TANK CAPACITIES (100%)	
Length Overall	40.37 m	Main Engine	3 x CAT C32, each 1,401 BHP @ 2,300 rpm	Fuel Oil	104 m3
Length (BP)	40.25 m	Propulsion	Triple Screw, Fixed Pitch, 5 Bladed Propellers	Fresh Water	19 m3
Beam Moulded	7.8 m	Marine Gear	Twin Disc HPTO 366	Dirty Oil Tank	0.97 m3
Depth Moulded	3.4 m	Power Take Off		Lubricating Oil Tank	0.97 m3
Draft (Design)	1.3 m	Bow Thruster	Petter's Electro Hydraulic Bow Thruster – Model S-60-80 - 100 BHP	PUMP CAPACITIES	
Deadweight at max draft	95.71 MT			Fuel Oil Cargo Pump	43 m3/hr @ 40m
GRT/NRT	270 / 81	GENERATORS		FW Cargo Pump	52 m3/hr @ 40m
Deck area	126 m2 (21m x 6m)	Main Genset	2 x Perkins Powerdrive, each 90KW, 415V, 3ph, 50Hz	NAVIGATION EQUIPMENT	
Deck Strength	3 MT per sq.m.	Electrical Sockets:	4 x 415V, 3ph, 50Hz, 32A	GPS	Furuno GP-150
SPEED		DECK MACHINERY		GMDSS	Furuno DMC-5 GMDSS
Service Speed	17 knots	Windlass	Hydraulic 10.9T@13m/min	VHF	Furuno FM-8800S, Motorola GM 338
Maximum Speed	24 knots	Tugger Winch	3 T	SSB Radio	Furuno FS-1570
ACCOMMODATION		Deck Crane	1 x electro-hydraulic, SWL 480kg @4m	Radar	Furuno FR-1505 MK3 & 1932 MK2
Cabins/Berths	Nil (Passenger)	MISCELLANEOUS		Satellite Tel/Fax	TT3064A Thrane & Thrane
Hospital	2 berths	Oily Water Separator	1 x YSF Marine OWS – Cap. 1.0 m3/hr	Depth Sounder	Furuno FE-700
Seating	80 aircraft seats	Sewage Holding Tank	Cap. 0.5 m3	Speed Log	Furuno DS-80
Toilets	2 units (Passenger)			Gyro Compass	Anschutz Standard 22
Entertainment	2 units LCD TV c/w DVD player			Magnetic Compass	Cassen & Plath
LIFE SAVING EQUIPMENT				Auto Pilot	Anschutz NP 60
Life Raft	4 x 65-men			Navtex	Mcmurdo Nav7 Receiver
Life Jackets	100 units			Wind Speed Indicator	R.M. Young 05103-58
Life Buoys	6 units			Public Address System	Vingtor
Rescue Zone	Yes			Intercom System	Vingtor
Scrambling Nets	2 units			Search Light	3 x 1000 Watts 2 Fwd & 1 Aft
Deck Spray Shield	Yes				
Rescue Boat	1 x 6-men, inflatable				
Other Equipment	SART, EPIRB, Pyrotechnics, Line Throwing Apparatus				
FIRE-FIGHTING & ANTI-POLLUTION EQUIPMENT					
Fifi Class ½ with Water Spray					
Fire Pump	1 x 1300 m3/hr				
Monitor	1 x 1200 m3/hr, remote controlled				
Oil Dispersant System	Nozzle Type				

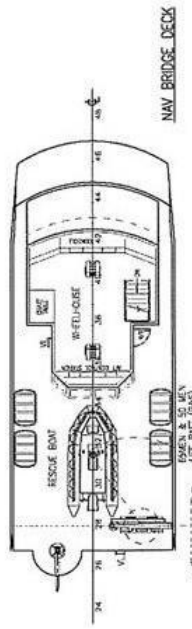
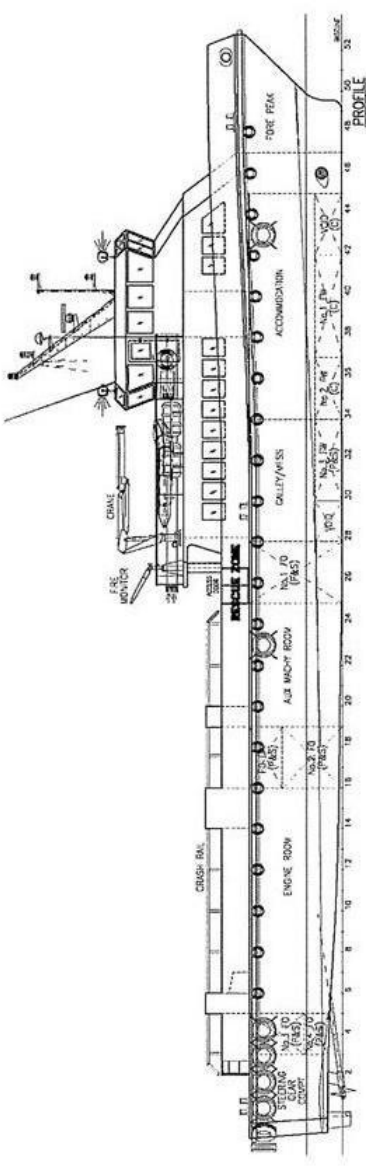
Particulars believed to be correct but not guaranteed. All figures given are approximate only. Owners reserve the right to amend the specifications without notice.

MARCO POLO MARINE LIMITED | 66 Kallang Pudding Road, Hor Kew Business Centre #05-01 Singapore 349324 | Tel: 6741-2545 Fax: 6659-4685 |

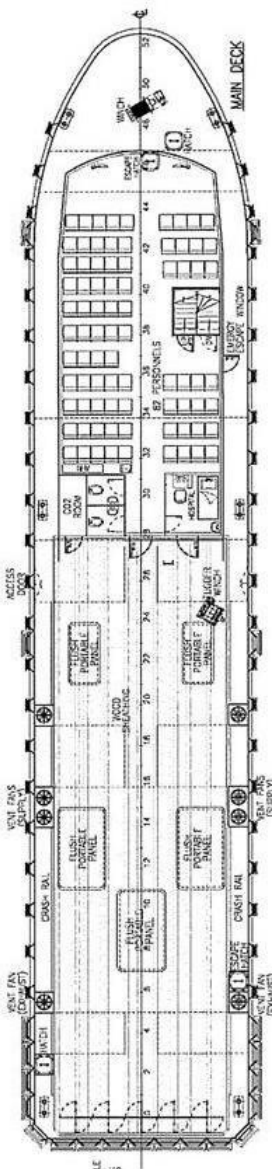
www.marcopolomarine.com.sg

For enquiries: ops.offshore@marcopolomarine.com.sg

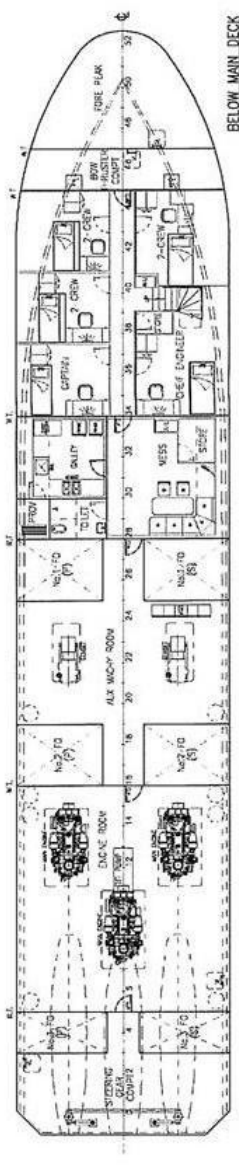
GENERAL ARRANGEMENT



NAV BRIDGE DECK



MAIN DECK



BELOW MAIN DECK

PRINCIPAL DIMENSIONS

LENGTH OVERALL	40.377 m
LENGTH WATERLINE	38.048 m
BREADTH MOULDED	7.80 m
DEPTH MOULDED	3.40 m
DESIGN DRAFT (MLD)	1.30 m
PERSONNEL	80

FAST OFFSHORE SUPPLY PTE LTD
MR. TSUI WAI CHEONG ANDREW
21 TUAS ROAD
SINGAPORE 634889
TEL : +65 6861 3881
FAX : +65 6861 6183
EMAIL : atsui@singnet.com.sg