



*challenging new frontiers  
a voyage beyond excellence*

# MP PERKASA

## AHTS / 8160 BHP / DP2 / FIFI 1



VESSEL INFORMATION	
Ownership	Marco Polo Shipyard Pte Ltd
Flag	Singapore
Builder	PT Marco Polo Shipyard - Batam
Year Built	2015
Call Sign	9V3420
Official Number	400124
IMO Number	9776913
CLASS	ABS
Notations	✳️A1, Towing Vessel, AH, FFV 1, Offshore Support Vessel, Supply, (E), ✳️AMS, ✳️ACCU, ✳️DPS-2, UWILD, SPS, RW

PRINCIPAL PARTICULARS		PROPULSION SYSTEM		DECK MACHINERY	
Length Overall	70.30 m	Main Engine	2 x MAK 9M25, 4080BHP each @750rpm	Anchors	Anchors – 2 x HHP AC-14, 1980kg each
Length (BP)	68.30 m	CPP (Berg Prop.)	2 x 4 bladed CPP in Nozzles	Chain Cables	467.5m ø40mm, Gr.3a
Beam Moulded	16.60 m	Bow Thruster	2 x Kawasaki CPP tunnel thruster, 800KW, 12.0T	Windlass (ZICOM)	1 set electro-hydraulic 11 MT @ 12m/min
Depth Moulded	6.80 m	Stern Thruster	2 x Kawasaki CPP tunnel thruster, 400KW, 6.2T	Tugger Winch	2 x 10 MT @ 15 m/min
Draft (Design)	5.50 m	Rudder	2xhigh-lift type (Becker)	Vert. Capstan	2 x 5 MT @0-15 m/min
Draft (Max)	5.80 m	Steering Gear	Ram type (Jastram)	Rope Reel	Cap.– 1500m x ø64mm
Deadweight at max draft	2300 MT	<b>GENERATORS</b>		Deck Crane	1 x electro-hydraulic, SWL 5 MT @12m
GRT/NRT	2562 / 768	Shaft Alternator	2 x 1800KW, 440V, 3ph, 60Hz	<b>DP SYSTEM</b>	
Deck area	495 m2	Main Genset	2 x CAT C18, each 550KW, 440V, 3ph, 60Hz	DP-2 (MT Marine)	
Deck Strength	7.5 MT per sq.m.	Emergency Genset	1 x CAT C4.4, 238KW, 440V, 3ph, 60Hz	<b>TANK CAPACITIES (100%)</b>	
Deck Carrying Capacity	800 MT minimum	Electrical Sockets:	4x440V,60Hz, 4x415V,50Hz 4x220V,60Hz, 4x215V,50Hz	Fuel Oil	823.6 m3
<b>SPEED</b>		<b>TOWING &amp; ANCHOR HANDLING EQUIPMENT</b>		Potable Water	565 m3
Service Speed	12 knots	Towing/Anchor Handling Winch	ZICOM electro-hydraulic waterfall type double drum Brake Holding – 300 MT Line Pull – 250 MT	Drill/FW/BallastWater	797.3 m3
Maximum Speed	14.0 knots	Towing Drum Cap.	1500m x ø64mm	OBM/Base Oil	367.9 m3 (2314 bbls)
<b>BOLLARD PULL</b>		AH Drum Cap.	1500m x ø64mm	Rig Chain Lockers	156.8 m3
Bollard Pull	120.33 MT	Towing Pins	1 set @ SWL 320 MT (KARMOY)	Brine	367.9 (Mud Tanks) + 156.8 (RCL) = 524.7 m3
<b>ACCOMMODATION</b>		KARM FORK	2 units KARM FORK, SWL 300 MT	Dry Bulk Cargo Tanks	220 m3 (4 x 2000 cu.ft = 8000 cu.ft)
6 x 1-berth cabins	6	Stern Roller	L4.5m x ø1.8m, SWL 450MT	Foam tank	20.5 m3
3 x 2-berth cabins	6	<b>MISCELLANEOUS</b>		Dispersant tank	20.5 m3
6 x 4-berth cabins	24	Oily Water Separator	1 x OWS (Cap. 1 m3/hr)	Bilge Holding tank	6.4 m3
Total:	36 (fully air-con)	Sewage Treatment Plant	1 x STP (Cap. 40 men)	<b>PUMP CAPACITIES</b>	
Complement	14	Water Maker	1 x 8 MT/day	Cargo Fuel Oil Pump	1 x 150 m3/hr @90m
<b>LIFE SAVING EQUIPMENT</b>				Potable Water Pump	1 x 150 m3/hr @90m
Inflatable liferaft	6 x 25-men			Drill Water Pump	1 x 150 m3/hr @90m
Rescue boat	1 x 6-men semi-rigid, c/w 25HP outboard motor, davit-launched			Liquid Mud/Base Oil Pump	2 x 100 m3/hr @80m
<b>FIRE-FIGHTING &amp; ANTI-POLLUTION EQUIPMENT</b>				Cargo Brine Pump	1 x 100 m3/hr @80m
FiFi Class 1 with Water Spray				Dry Bulk Discharge Rate	80 m3/hr @60m
Pump	2 x 1650 m3/hr				
Monitor	2 x 1200 m3/hr, 12 bar, 120m, remote cntrl.				
Oil Dispersant System	2 x 6m spray boom with nozzles				

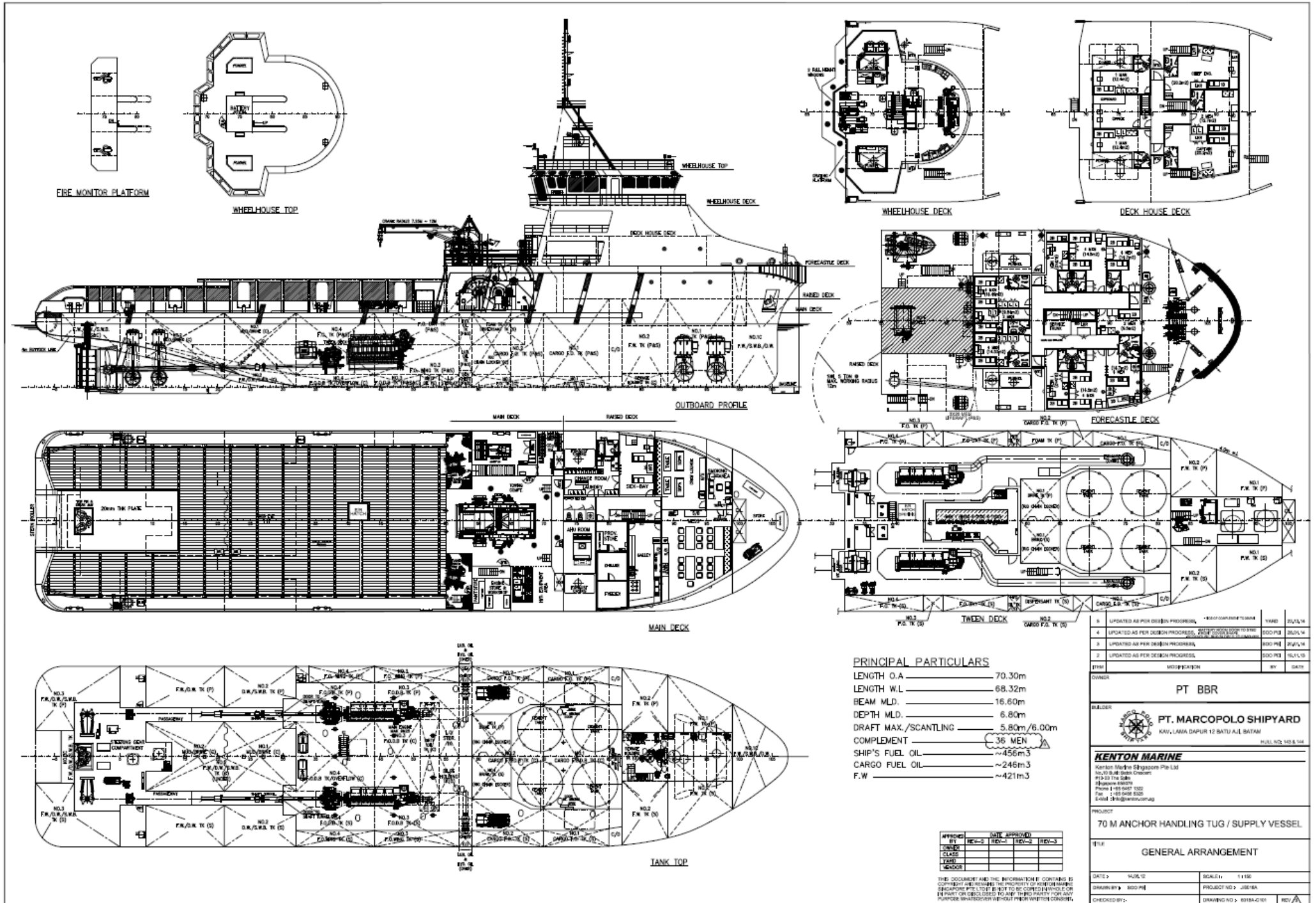
Particulars believed to be correct but not guaranteed. All figures given are approximate only. Owners reserve the right to amend the specifications without notice.

MARCO POLO MARINE LIMITED | 66 Kallang Pudding Road, Hor Kew Business Centre #05-01 Singapore 349324 | Tel: 6741-2545 Fax: 6659-4685 |

[www.marcopolomarine.com.sg](http://www.marcopolomarine.com.sg)

For enquiries: [ops.offshore@marcopolomarine.com.sg](mailto:ops.offshore@marcopolomarine.com.sg)

# GENERAL ARRANGEMENT



### PRINCIPAL PARTICULARS

LENGTH O.A.	70.30m
LENGTH W.L.	68.32m
BEAM MLD.	16.60m
DEPTH MLD.	6.80m
DRAFT MAX./SCANTLING	5.80m/6.00m
COMPLEMENT	36 MEN
SHIP'S FUEL OIL	~456m <sup>3</sup>
CARGO FUEL OIL	~246m <sup>3</sup>
F.W FUEL OIL	~421m <sup>3</sup>

APPROVED BY	REV-2	REV-1	REV-2	REV-3
DATE				
CLASS				
YARD				
VENDOR				

THIS DOCUMENT AND THE INFORMATION IT CONTAINS IS CONFIDENTIAL AND REMAINS THE PROPERTY OF KENTON MARINE SINGAPORE PTE. LTD. IT IS NOT TO BE COPIED, REPRODUCED OR IN ANY MANNER OR DISCLOSED TO ANY THIRD PARTY FOR ANY PURPOSE WHATSOEVER WITHOUT PRIOR WRITTEN CONSENT.

1	UPDATED AS PER DESIGN PROGRESS, -	500 PIR	22/12/14
2	UPDATED AS PER DESIGN PROGRESS, -	500 PIR	22/12/14
3	UPDATED AS PER DESIGN PROGRESS, -	500 PIR	22/12/14
4	UPDATED AS PER DESIGN PROGRESS, -	500 PIR	22/12/14
5	UPDATED AS PER DESIGN PROGRESS, -	500 PIR	22/12/14
6	UPDATED AS PER DESIGN PROGRESS, -	500 PIR	22/12/14
7	UPDATED AS PER DESIGN PROGRESS, -	500 PIR	22/12/14
8	UPDATED AS PER DESIGN PROGRESS, -	500 PIR	22/12/14
9	UPDATED AS PER DESIGN PROGRESS, -	500 PIR	22/12/14
10	UPDATED AS PER DESIGN PROGRESS, -	500 PIR	22/12/14
11	UPDATED AS PER DESIGN PROGRESS, -	500 PIR	22/12/14
12	UPDATED AS PER DESIGN PROGRESS, -	500 PIR	22/12/14
13	UPDATED AS PER DESIGN PROGRESS, -	500 PIR	22/12/14
14	UPDATED AS PER DESIGN PROGRESS, -	500 PIR	22/12/14
15	UPDATED AS PER DESIGN PROGRESS, -	500 PIR	22/12/14
16	UPDATED AS PER DESIGN PROGRESS, -	500 PIR	22/12/14
17	UPDATED AS PER DESIGN PROGRESS, -	500 PIR	22/12/14
18	UPDATED AS PER DESIGN PROGRESS, -	500 PIR	22/12/14
19	UPDATED AS PER DESIGN PROGRESS, -	500 PIR	22/12/14
20	UPDATED AS PER DESIGN PROGRESS, -	500 PIR	22/12/14
21	UPDATED AS PER DESIGN PROGRESS, -	500 PIR	22/12/14
22	UPDATED AS PER DESIGN PROGRESS, -	500 PIR	22/12/14
23	UPDATED AS PER DESIGN PROGRESS, -	500 PIR	22/12/14
24	UPDATED AS PER DESIGN PROGRESS, -	500 PIR	22/12/14
25	UPDATED AS PER DESIGN PROGRESS, -	500 PIR	22/12/14
26	UPDATED AS PER DESIGN PROGRESS, -	500 PIR	22/12/14
27	UPDATED AS PER DESIGN PROGRESS, -	500 PIR	22/12/14
28	UPDATED AS PER DESIGN PROGRESS, -	500 PIR	22/12/14
29	UPDATED AS PER DESIGN PROGRESS, -	500 PIR	22/12/14
30	UPDATED AS PER DESIGN PROGRESS, -	500 PIR	22/12/14
31	UPDATED AS PER DESIGN PROGRESS, -	500 PIR	22/12/14
32	UPDATED AS PER DESIGN PROGRESS, -	500 PIR	22/12/14
33	UPDATED AS PER DESIGN PROGRESS, -	500 PIR	22/12/14
34	UPDATED AS PER DESIGN PROGRESS, -	500 PIR	22/12/14
35	UPDATED AS PER DESIGN PROGRESS, -	500 PIR	22/12/14
36	UPDATED AS PER DESIGN PROGRESS, -	500 PIR	22/12/14
37	UPDATED AS PER DESIGN PROGRESS, -	500 PIR	22/12/14
38	UPDATED AS PER DESIGN PROGRESS, -	500 PIR	22/12/14
39	UPDATED AS PER DESIGN PROGRESS, -	500 PIR	22/12/14
40	UPDATED AS PER DESIGN PROGRESS, -	500 PIR	22/12/14
41	UPDATED AS PER DESIGN PROGRESS, -	500 PIR	22/12/14
42	UPDATED AS PER DESIGN PROGRESS, -	500 PIR	22/12/14
43	UPDATED AS PER DESIGN PROGRESS, -	500 PIR	22/12/14
44	UPDATED AS PER DESIGN PROGRESS, -	500 PIR	22/12/14
45	UPDATED AS PER DESIGN PROGRESS, -	500 PIR	22/12/14
46	UPDATED AS PER DESIGN PROGRESS, -	500 PIR	22/12/14
47	UPDATED AS PER DESIGN PROGRESS, -	500 PIR	22/12/14
48	UPDATED AS PER DESIGN PROGRESS, -	500 PIR	22/12/14
49	UPDATED AS PER DESIGN PROGRESS, -	500 PIR	22/12/14
50	UPDATED AS PER DESIGN PROGRESS, -	500 PIR	22/12/14
51	UPDATED AS PER DESIGN PROGRESS, -	500 PIR	22/12/14
52	UPDATED AS PER DESIGN PROGRESS, -	500 PIR	22/12/14
53	UPDATED AS PER DESIGN PROGRESS, -	500 PIR	22/12/14
54	UPDATED AS PER DESIGN PROGRESS, -	500 PIR	22/12/14
55	UPDATED AS PER DESIGN PROGRESS, -	500 PIR	22/12/14
56	UPDATED AS PER DESIGN PROGRESS, -	500 PIR	22/12/14
57	UPDATED AS PER DESIGN PROGRESS, -	500 PIR	22/12/14
58	UPDATED AS PER DESIGN PROGRESS, -	500 PIR	22/12/14
59	UPDATED AS PER DESIGN PROGRESS, -	500 PIR	22/12/14
60	UPDATED AS PER DESIGN PROGRESS, -	500 PIR	22/12/14
61	UPDATED AS PER DESIGN PROGRESS, -	500 PIR	22/12/14
62	UPDATED AS PER DESIGN PROGRESS, -	500 PIR	22/12/14
63	UPDATED AS PER DESIGN PROGRESS, -	500 PIR	22/12/14
64	UPDATED AS PER DESIGN PROGRESS, -	500 PIR	22/12/14
65	UPDATED AS PER DESIGN PROGRESS, -	500 PIR	22/12/14
66	UPDATED AS PER DESIGN PROGRESS, -	500 PIR	22/12/14
67	UPDATED AS PER DESIGN PROGRESS, -	500 PIR	22/12/14
68	UPDATED AS PER DESIGN PROGRESS, -	500 PIR	22/12/14
69	UPDATED AS PER DESIGN PROGRESS, -	500 PIR	22/12/14
70	UPDATED AS PER DESIGN PROGRESS, -	500 PIR	22/12/14
71	UPDATED AS PER DESIGN PROGRESS, -	500 PIR	22/12/14
72	UPDATED AS PER DESIGN PROGRESS, -	500 PIR	22/12/14
73	UPDATED AS PER DESIGN PROGRESS, -	500 PIR	22/12/14
74	UPDATED AS PER DESIGN PROGRESS, -	500 PIR	22/12/14
75	UPDATED AS PER DESIGN PROGRESS, -	500 PIR	22/12/14
76	UPDATED AS PER DESIGN PROGRESS, -	500 PIR	22/12/14
77	UPDATED AS PER DESIGN PROGRESS, -	500 PIR	22/12/14
78	UPDATED AS PER DESIGN PROGRESS, -	500 PIR	22/12/14
79	UPDATED AS PER DESIGN PROGRESS, -	500 PIR	22/12/14
80	UPDATED AS PER DESIGN PROGRESS, -	500 PIR	22/12/14
81	UPDATED AS PER DESIGN PROGRESS, -	500 PIR	22/12/14
82	UPDATED AS PER DESIGN PROGRESS, -	500 PIR	22/12/14
83	UPDATED AS PER DESIGN PROGRESS, -	500 PIR	22/12/14
84	UPDATED AS PER DESIGN PROGRESS, -	500 PIR	22/12/14
85	UPDATED AS PER DESIGN PROGRESS, -	500 PIR	22/12/14
86	UPDATED AS PER DESIGN PROGRESS, -	500 PIR	22/12/14
87	UPDATED AS PER DESIGN PROGRESS, -	500 PIR	22/12/14
88	UPDATED AS PER DESIGN PROGRESS, -	500 PIR	22/12/14
89	UPDATED AS PER DESIGN PROGRESS, -	500 PIR	22/12/14
90	UPDATED AS PER DESIGN PROGRESS, -	500 PIR	22/12/14
91	UPDATED AS PER DESIGN PROGRESS, -	500 PIR	22/12/14
92	UPDATED AS PER DESIGN PROGRESS, -	500 PIR	22/12/14
93	UPDATED AS PER DESIGN PROGRESS, -	500 PIR	22/12/14
94	UPDATED AS PER DESIGN PROGRESS, -	500 PIR	22/12/14
95	UPDATED AS PER DESIGN PROGRESS, -	500 PIR	22/12/14
96	UPDATED AS PER DESIGN PROGRESS, -	500 PIR	22/12/14
97	UPDATED AS PER DESIGN PROGRESS, -	500 PIR	22/12/14
98	UPDATED AS PER DESIGN PROGRESS, -	500 PIR	22/12/14
99	UPDATED AS PER DESIGN PROGRESS, -	500 PIR	22/12/14
100	UPDATED AS PER DESIGN PROGRESS, -	500 PIR	22/12/14

OWNER: PT BBR  
 BUILDER: PT. MARCOPOLO SHIPYARD  
 KAW, LAMA DAPUR 12 BATU AJI, BATAM  
 HULL NO. 102 & 104

KENTON MARINE  
 Kenton Marine Singapore Pte Ltd  
 41-43 The Esplanade  
 Singapore 038978  
 Phone: +65 6487 1332  
 Fax: +65 6487 8332  
 Email: ksm@kentonmarine.com.sg

PROJECT: 70 M ANCHOR HANDLING TUG / SUPPLY VESSEL

TITLE: GENERAL ARRANGEMENT

DATE:	14/12/14	SCALE:	1:100
DRAWN BY:	8002 PH	PROJECT NO.:	JBB-08A
CHECKED BY:		DRAWING NO.:	0308A-01
		REV:	