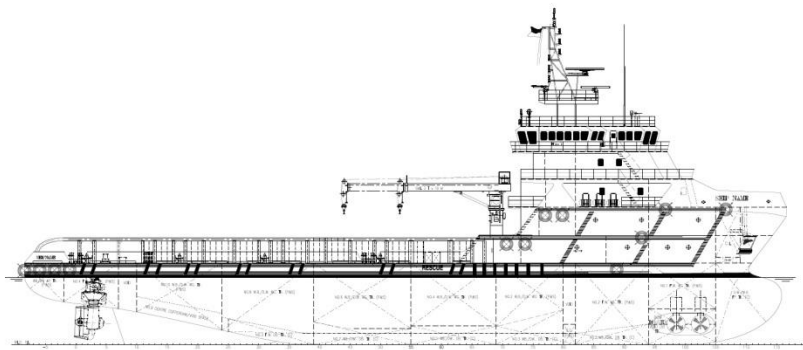




*challenging new frontiers  
a voyage beyond excellence*

# MP LAKSANA

## PSV / 6000 BHP / DP2 / FIFI 1



### VESSEL INFORMATION

Ownership	BBR Shipping Pte Ltd
Flag	Singapore
Builder	China
Year Built	2016
Call Sign	TBA
Official Number	TBA
IMO Number	TBA
CLASS	ABS
Notations	✕A1, FFV 1, OSR-C2, Offshore Support Vessel, Supply-HNLS, (E), ✕AMS, ACCU, ✕DPS-2, UWILD, SPS, RW

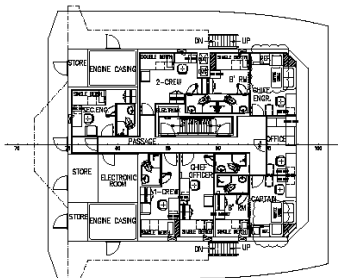
PRINCIPAL PARTICULARS		PROPULSION SYSTEM		DECK MACHINERY	
Length Overall	75.00 m	Main Engines (Fuel – MGO)	2 x NIIGATA 8L28HX, 3000 BHP each, with front PTO for Shaft Gen. & FiFi Pump	Anchors	TBA
Length (BP)	67.46 m	Main Thrusters	2 x Main Engine Driven Azimuth Thrusters (Fixed Pitch Propeller)	Chain Cables	46mm chain
Beam Moulded	17.25 m	Bow Thrusters	2 x CPP Tunnel Thrusters, Electric Motor Driven 600 KW, 10 Tonnes Thrust	Windlass	1 x Electro-hydraulic Cap. 13 MT @18m/min
Depth Moulded	8.00 m			Tugger Winch	2 x Electro-hydraulic Cap. 10 MT @24m/min
Draft (Design)	6.50 m			Capstan	2 x Electro-hydraulic Cap. 10 MT @25m/min
Draft (Max)	6.60 m			Deck Crane	1 x electro-hydraulic, SWL 3 MT @10m
Deadweight at max draft	3,300 MT	<b>GENERATORS</b>		<b>TANK CAPACITIES (100%)</b>	
GRT/NRT	2,950 / 885	Shaft Alternator	2 x 1000 KW, Engine Driven through PTO gear box, 415VAC /3/50Hz	Fresh Water	546.4 m <sup>3</sup>
Deck area	700 m <sup>2</sup> min	Main Genset (Fuel – MGO)	3 x Diesel Driven, 450 KW each, 415VAC /3/50 Hz	Fuel Oil	766.9 m <sup>3</sup>
Deck Strength	5.5 MT per m <sup>2</sup>	Emergency Genset (Fuel – MGO)	1 x Diesel Driven, 80 KW, 415 VAC /3/50 Hz	Drill Water/SW Ballast	1,528 m <sup>3</sup>
Deck Carrying Capacity	1,200 MT	Electrical Sockets:	5 x 415V, 32A, 50Hz 1 x 415V, 64A, 50Hz 2 x 220V, 32A, 50Hz	Mud/Brine/Rec.Oil	739.6 m <sup>3</sup>
<b>SPEED</b>		<b>DP SYSTEM</b>		Dry Bulk (Cement/Barite)	227.8 m <sup>3</sup> 4 tanks x 2000 ft <sup>3</sup>
Service Speed	10.0 knots	Dynamic positioning system(Kongsberg) according to ABS DPS-2 c/w with 2 off DP operator stations, 3 off Gyrocompass, 3 off Wind sensor, 2 off Vertical reference unit, 1 off Laser reference system, 3 off DGPS, 2 off UPS, 2 off Printer		Methanol/Base Oil	148.2 m <sup>3</sup>
Maximum Speed	12.5 knots	<b>NAVIGATION EQUIPMENT</b>		Foam	12.7 m <sup>3</sup>
<b>ENDURANCE</b>		<b>COMMUNICATION EQUIPMENT</b>		Dispersant	12.7 m <sup>3</sup>
Endurance	28 days	GMDSS Area A1+A2+A3, PA/Talk Back and Sound Powered Telephone System, Auto Tel. System		Bilge Tank	16.4 m <sup>3</sup>
<b>ACCOMMODATION</b>		<b>MISCELLANEOUS</b>		Dirty Oil Tank	16.4 m <sup>3</sup>
6 x 1-berth cabins	6 men	Oily Water Separator	1m <sup>3</sup> /hr	Lube Oil Tank	18.8 m <sup>3</sup>
22 x 2-berth cabins	44 men	Sewage Treatment Plant	50 pax capacity	Hyd. Oil Tank	7.0 m <sup>3</sup>
Total	50 men	Water Maker	2 units RO, Total 20MT/day	<b>PUMP CAPACITIES</b>	
Complement	14 men			Fresh Water Pump	100m <sup>3</sup> /hr @ 85m head
Hospital	1 man			Cargo Fuel Oil Pump, gear type (2 units)	150m <sup>3</sup> /hr @ 80m head
<b>LIFE SAVING EQUIPMENT</b>				Drill Water Pump, centrifugal	100m <sup>3</sup> /hr @ 80m head
Inflatable liferaft	6 x 25-men			Mud/Brine/Rec.Oil Pump (2 units)	75m <sup>3</sup> /hr @ 90m head
Rescue boat	1 x 6-men semi-rigid, c/w 25HP outboard motor, davit-launched			Methanol Pump	70m <sup>3</sup> /hr @ 7 bar
<b>FIRE-FIGHTING &amp; ANTI-POLLUTION EQUIPMENT</b>				Dry Bulk Discharge Rate	2 x 20 m <sup>3</sup> /min Compr. WP 80 psi (5.6 bar)
FiFi Class 1 with Water Spray					
Pump	2 x 1500 m <sup>3</sup> /hr				
Monitor	2 x 1200 m <sup>3</sup> /hr				
Oil Dispersant System	2 x 6m spray boom with nozzles				
Fixed Fire Protection	CO2 (Engine Room)				

Particulars believed to be correct but not guaranteed. All figures given are approximate only. Owners reserve the right to amend the specifications without notice.

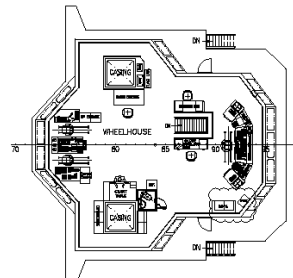
MARCO POLO MARINE LIMITED | 66 Kallang Pudding Road, Hor Kew Business Centre #05-01 Singapore 349324 | Tel: 6741-2545 Fax: 6659-4685 |

[www.marcopolomarine.com.sg](http://www.marcopolomarine.com.sg)

For enquiries: [ops.offshore@marcopolomarine.com.sg](mailto:ops.offshore@marcopolomarine.com.sg)



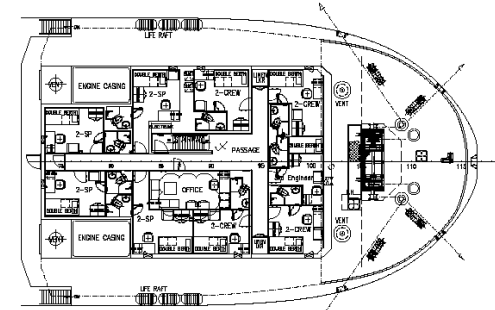
OFFICER DECK  
5 x 1-CREW = 5 MEN  
1 x 2-CREW = 2 MEN  
TOTAL = 7 MEN



NAV. BRIDGE DECK

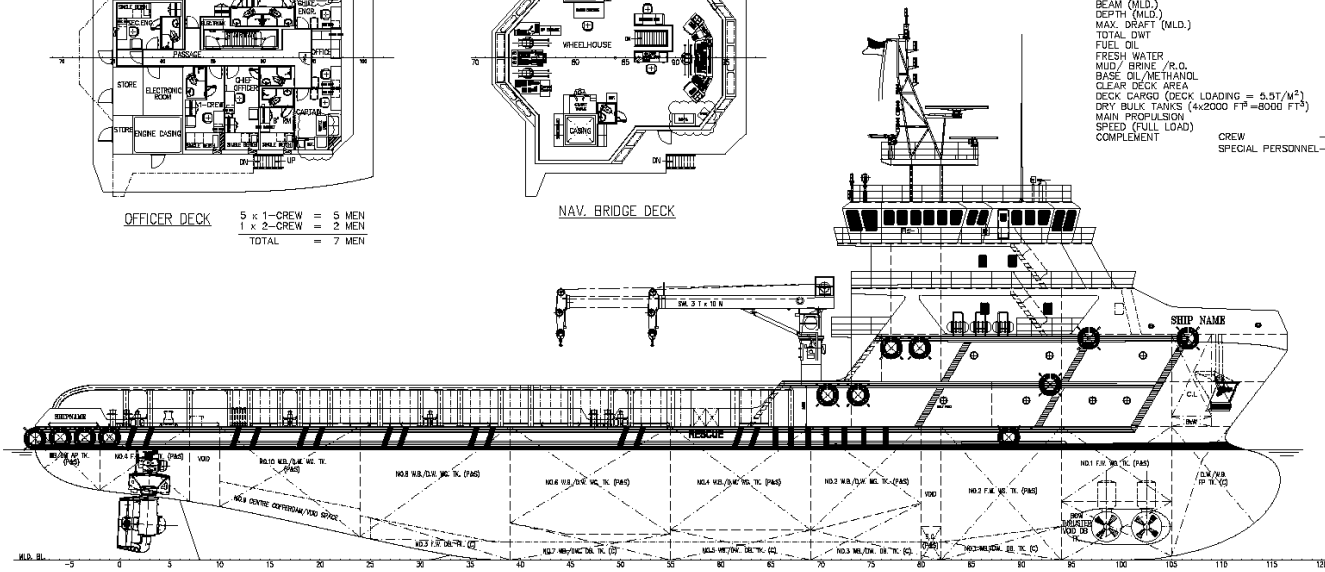
PRINCIPAL DIMENSIONS

LENGTH (O.A.)	75,000 M
LENGTH (W.L.)	75,515 M
LENGTH (B.P.)	97,468 M
BEAM (M.L.D.)	17,250 M
DEPTH (M.L.D.)	8,000 M
MAX. DRAFT (M.L.D.)	6,800 M
TOTAL DWT	3300 TONS
FUEL OIL	750 M <sup>3</sup>
FRESH WATER	548 M <sup>3</sup>
MUD / BRINE / R.O.	740 M <sup>3</sup>
BASE OIL/METHANOL	148 M <sup>3</sup>
CLEAR DECK AREA	7011 M <sup>2</sup>
DECK CARGO (DECK LOADING = 5.5T/M <sup>2</sup> )	1300 TONS
DRY BULK TANKS (4x2000 FP=8000 FT <sup>3</sup> )	226 M <sup>3</sup>
MAIN PROPULSION	2 X 3000 PS
SPEED (FULL LOAD)	12.5 KNOTS
COMPLEMENT	18 MEN
	CREW = 34 MEN
	SPECIAL PERSONNEL =

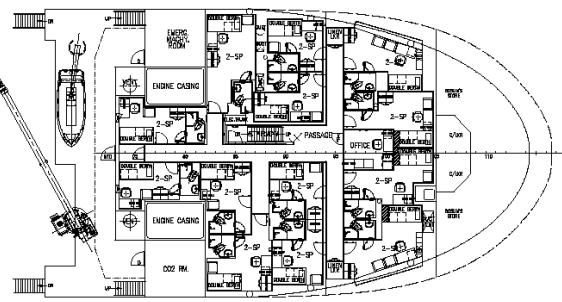


UPPER FORECASTLE DECK PLAN

1 x 1-CREW = 1 MEN  
4 x 2-CREW = 8 MEN  
4 x 2-SP = 8 MEN  
TOTAL = 17 MEN

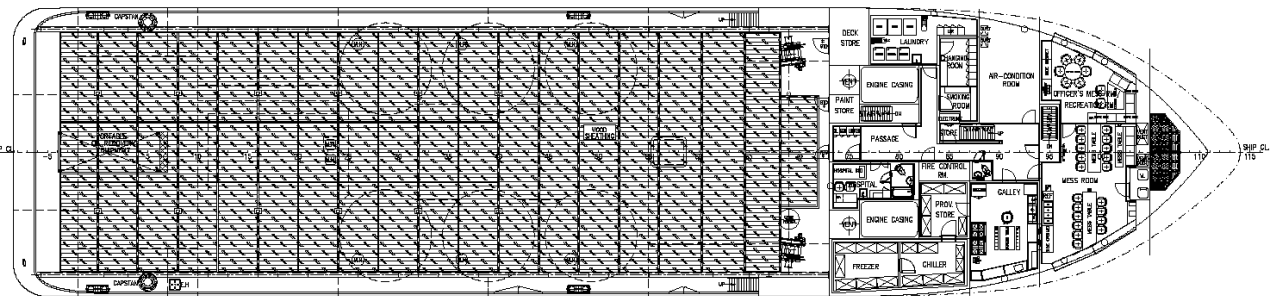


OUTBOARD PROFILE

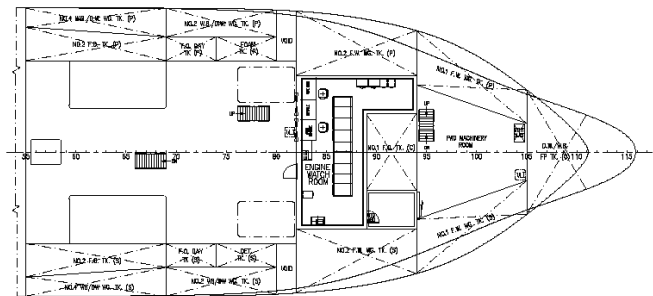


FORECASTLE DECK PLAN

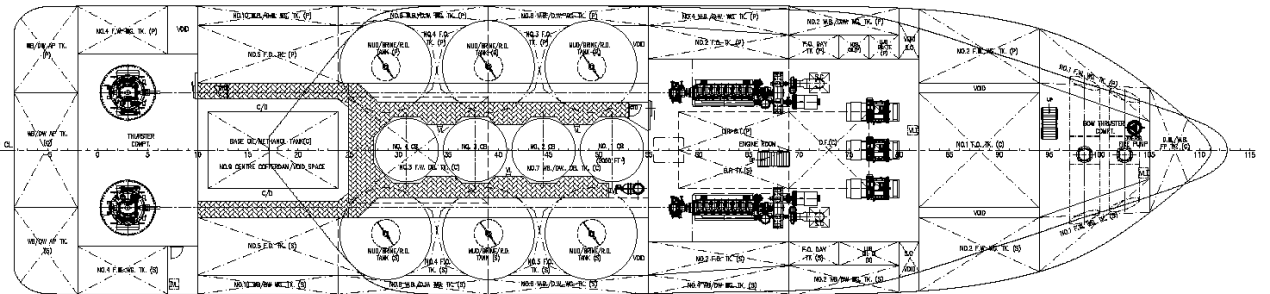
13 x 2-SP = 26 MEN  
TOTAL = 25 MEN



MAIN DECK PLAN



TWEEN DECK PLAN



BELOW DECK PLAN

NOTE:-

- PLEASE NOTE THAT A STAIRWAY WHICH IS ENCLOSED ONLY AT ONE LEVEL SHALL BE REGARDED AS PART OF THE SPACE FROM WHICH IT IS NOT SEPARATED BY A FIRE DOOR.
- SELF-CLOSING DOORS TO BE PROVIDED, AND APPROPRIATE ARRANGEMENTS TO AVOID INJURY TO PERSONS IN THE CORRIDOR SHALL BE CONSIDERED.
- A TOE BOARD OR KICK PLATE BE INSTALLED ON THE BRIDGE WING DECK BELOW THE LOWER RAIL COURSE.
- DECK AREA FOR HANDLING OIL AND OIL-BASED LIQUIDS ARE TO BE PROVIDED WITH A COAMING OF AT LEAST 150MM HEIGHT AROUND ALL PUMPS, TRANSFER FLANGE, CONNECTIONS AND OTHER EQUIPMENT WHERE LEAKAGE MAY OCCUR. COAMING FOR RECOVERY OIL MAY BE OF REMOVABLE TYPE.
- BALLAST WATER TANKS/DRLING WATER TANKS ARE NOT DEDICATED SEAWATER BALLAST TANKS.
- THE ACCESS DOORS TO DECK STORE & PAINT STORE ARE TO BE OF SELF-CLOSING GAS-TIGHT WITHOUT HOLD-BACK DEVICES, SECURED AND FITTED WITH SIGNS INDICATING THAT THE ROOMS ARE NOT TO BE ENTERED AND THE DOORS ARE TO REMAIN CLOSED DURING OIL RECOVERY OPERATIONS.
- THE ACCESS DOORS TO ACCOMMODATION SPACE ON THE MAIN DECK ARE TO BE WATER-TIGHT WITHOUT HOLD-BACK DEVICES, SECURED AND REMAINING CLOSED DURING OIL RECOVERY OPERATIONS.
- 2.2 ROUTES ARE PROVIDED FROM THE MEANS OF ESCAPE.

EMAIL : khmohua@kcm.com.sg  
PROJECT : XIAMEN SHIPBUILDING INDUSTRIES CO., LTD  
75m PLATFORM SUPPLY VESSEL