



challenging new frontiers
a voyage beyond excellence

MP KESATRIA

AHTS / 12,070 BHP / DP2 / FIFI 2



VESSEL INFORMATION	
Ownership	BBR Shipping Pte Ltd
Flag	Singapore
Builder	PT Marco Polo Shipyard - Batam
Year Built	2016
Call Sign	9V3384
Official Number	400092
IMO Number	9743344
CLASS	LR
Notations	✕100A1, AHTS, HNLS, Fire Fighting Ship 2, DP (AA), IWS, ✕LMC, UMS for unrestricted service and SPS Code 2008

PRINCIPAL PARTICULARS		PROPULSION SYSTEM		DECK MACHINERY	
Length Overall	76.00 m	Main Engine	2 x MAK 9M32C, 6035BHP each @600rpm	Anchors	Anchors – 2 x HHP AC-14, 2295 kg each
Length (BP)	69.17 m	CPP (CAT Prop.)	2 x 4-bladed CPP in Nozzles	Chain Cables	495m ø50mm, Gr.2
Beam Moulded	18.50 m	Bow Thruster	2 x Kawasaki CPP tunnel thruster, 800KW, 12.0T	Windlass (ZICOM)	1 set electro-hydraulic 16 MT @ 0-13m/min
Depth Moulded	8.00 m	Stern Thruster	2 x Kawasaki CPP tunnel thruster, 700KW, 10.7T	Tugger Winch	2 x 15 MT@0-21m/min
Draft (Design)	6.00 m	Rudder	2 x high-lift type (Becker)	Vert. Capstan	2 x 10 MT@0-25m/min
Draft (Max)	6.50 m	Steering Gear	Ram type (Jastram)	Rope Reel	2 x hydraulic control Cap. 2500m x ø76mm
Deadweight at max draft	3034 MT	GENERATORS		Deck Crane	1 x electro-hydraulic, SWL 5 MT @15m
GRT/NRT	3525 / 1057	Shaft Alternator	2 x 2300KW, 440V, 3ph, 60Hz	DP SYSTEM	
Deck area	580 m2	Main Genset	2 x CAT C18, each 550KW, 440V, 3ph, 60Hz	DP-2 (MT Marine)	
Deck Strength	5.5 MT per sq.m.	Emergency Genset	1 x CAT C9, 238KW, 440V, 3ph, 60Hz	TANK CAPACITIES (100%)	
Deck Carrying Capacity	800 MT minimum	Electrical Sockets:	4x440V,60Hz, 4x415V,50Hz 4x220V,60Hz, 4x215V,50Hz	Fuel Oil (Bunkers)	574.9 m3
SPEED		TOWING & ANCHOR HANDLING EQUIPMENT		Fuel Oil (Cargo)	923.9 m3
Service Speed	12 knots	Towing/Anchor Handling Winch (McGregor low pressure system)	Electro-hydraulic waterfall type double drum Brake Holding – 400 MT Line Pull – 300 MT @ first layer x 10m/min	Ballast/Drill Water	1552.5 m3
Maximum Speed	14.0 knots	Towing Drum Cap.	2500m x ø76mm	Fresh Water	714.5 m3
BOLLARD PULL		AH Drum Cap.	2500m x ø76mm	Liquid Mud	802.9 m3 (5050 bbls)
Bollard Pull	150 MT	Towing Pins (McGregor)	4 sets @ SWL 200 MT	Brine	802.9 (Mud Tanks) + 321.2 (RCL)= 1124.1m3
ACCOMMODATION		Shark Jaw (McGregor)	2 sets @ SWL 500 MT	Dry Bulk Cargo Tanks	331.6 m3 (11,710 cu.ft – 4 tanks)
6 x 1-berth cabins	6	Stern Roller (McGregor)	L5.5m x ø2.5m, SWL 525MT	Foam Tank	22.6 m3
20 x 2-berth cabins	40	MISCELLANEOUS		Dispersant Tank	22.6 m3
Total	46 men (fully air-cond)	Oily Water Separator	1 x OWS (Cap. 1 m3/hr)	Dirty Oil Tank	13.9 m3
Complement	14	Sewage Treatment Plant	1 x STP (Cap. 46 men)	PUMP CAPACITIES	
LIFE SAVING EQUIPMENT		Water Maker	1 x 5 MT/day	Cargo Fuel Oil Pump	2 x 150 m3/hr @90m
Inflatable liferafts	6 x 25-men in hinged type cradle c/w HRU			Potable Water Pump	2 x 150 m3/hr @90m
Rescue boat	1 x 6-men semi-rigid, c/w 40HP outboard motor, davit-launched			Drill Water Pump	1 x 150 m3/hr @90m
FIRE-FIGHTING & ANTI-POLLUTION EQUIPMENT				Liquid Mud/Base Oil Pump	2 x 150 m3/hr @90m
Fifi Class 2 with Water Spray				Cargo Brine Pump	1 x 150 m3/hr @90m
Pump	2 x 3700 m3/hr			Dry Bulk Discharge Rate	80 m3/hr @60m W.P. – 5.6 bar
Monitor	3 x 2400 m3/hr, 12 bar, 150m, remote cntrl.				
Oil Dispersant System	2 x 6m spray boom with nozzles				
Fixed CO2 System	Engine Room & BT Rm.				

Particulars believed to be correct but not guaranteed. All figures given are approximate only. Owners reserve the right to amend the specifications without notice.

MARCO POLO MARINE LIMITED | 66 Kallang Pudding Road, Hor Kew Business Centre #05-01 Singapore 349324 | Tel: 6741-2545 Fax: 6659-4685 |

www.marcopolomarine.com.sg

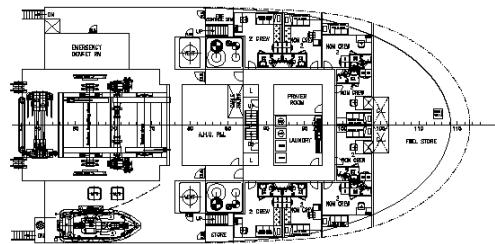
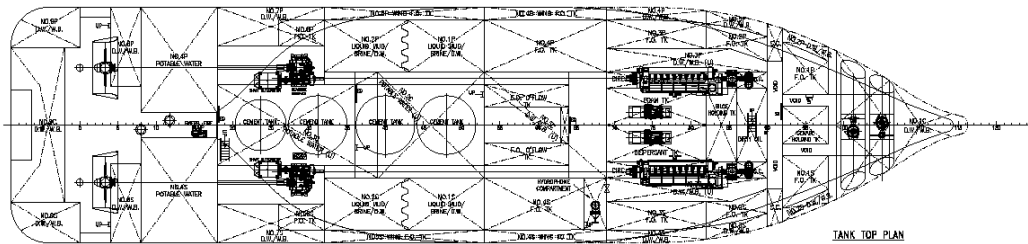
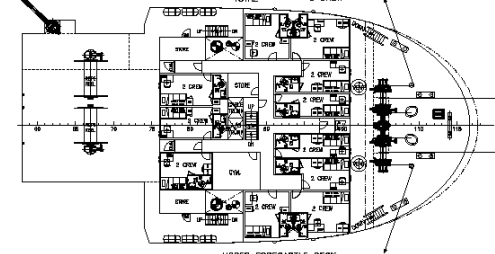
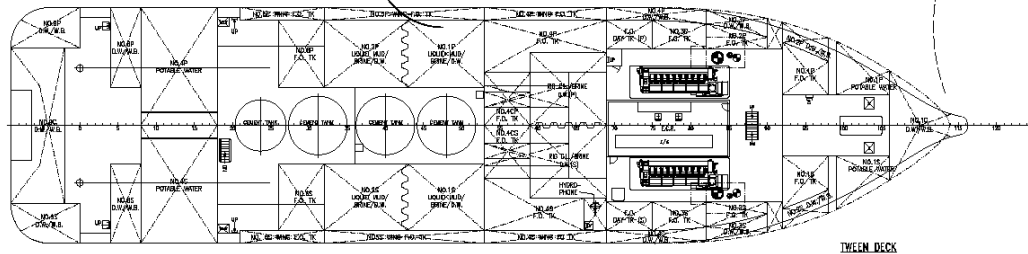
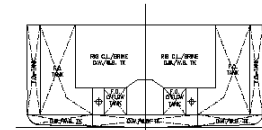
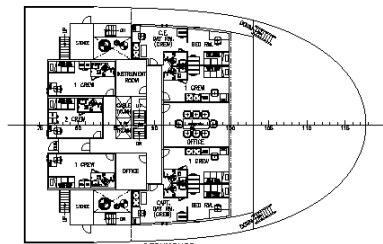
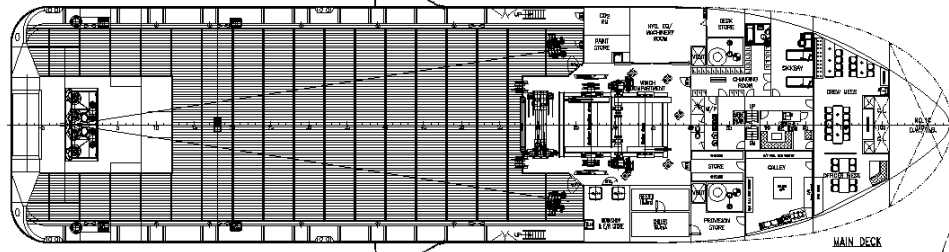
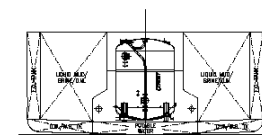
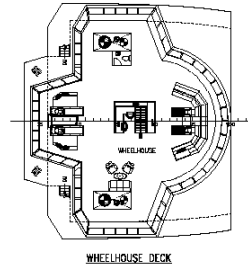
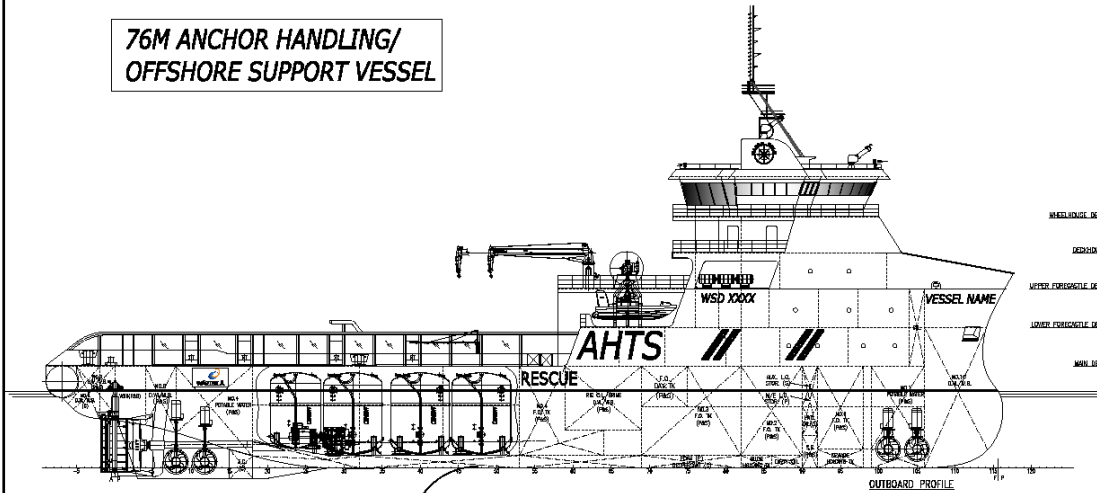
For enquiries: ops.offshore@marcopolomarine.com.sg

GENERAL ARRANGEMENT

**76M ANCHOR HANDLING/
OFFSHORE SUPPORT VESSEL**

PRINCIPAL PARTICULARS

LENGTH OA ----- 76.00m
 BEAM MLD. ----- 18.50m
 DEPTH MLD ----- 8.00m
 DESIGN DRAFT(MLD.) ----- 6.00m
 MAX. DRAFT(MLD.) ----- 6.50m (approx.)
 COMPLEMENT ----- 34 CREW
 12 NON CREW



30.04.14	REVISED AS PER DISCUSSION WITH OWNER DATED 29.04.14	E	COLAM
03.04.14	REVISED AS PER OWNER'S COMMENT	D	COLAM
14.03.14	REVISED AS PER DISCUSSION WITH OWNER DATED 10.03.14	C	COLAM
03.03.14	DESIGN GRANT ANCHORING ARRANGEMENT UPDATED	B	COLAM
28.02.14	REVISED AS PER DISCUSSION WITH OWNER DATED 28.02.14	A	COLAM
DATE	MODIFICATION	REV	BY
SHIP: 76m ANCHOR HANDLING/ OFFSHORE SUPPORT VESSEL			
TITLE: GENERAL ARRANGEMENT			
OWNER: WARD PULO MARINE LTD.	DESIGNER: WARD PULO SHIPYARD PTE LTD	TANK NO.	
CLASS: LLOYD'S REGISTER		145/146	
WARD PULO SHIP DESIGN SINGAPORE PTE. LTD.			
14 BEGG DRIVE, SINGAPORE 829777			
TEL: 65-6356-1118 FAX: 65-6356-1138 E-MAIL: WARDPULO@WARDPULO.COM			
DRAWN: COLAM	CHECKED: SHI	APPROVED: 1:200	DRAWING NO.: 40587-101-001
DATE: 21.02.14	BY: SHI	SCALE: 1:200	REV: E
THE DRAWING AND THE INFORMATION CONTAINED HEREIN ARE SUPPLIED BY THE UNDERSIGNED THAT THEY ARE THE SOLE PROPERTY OF WARD PULO SHIP DESIGN SINGAPORE PTE. LTD. THEY MUST NOT BE USED OR REPRODUCED IN WHOLE OR IN PART WITHOUT PERMISSION IN WRITING.			