



*challenging new frontiers  
a voyage beyond excellence*

## BINA MARINE 32 – 240' x 70' x 16'



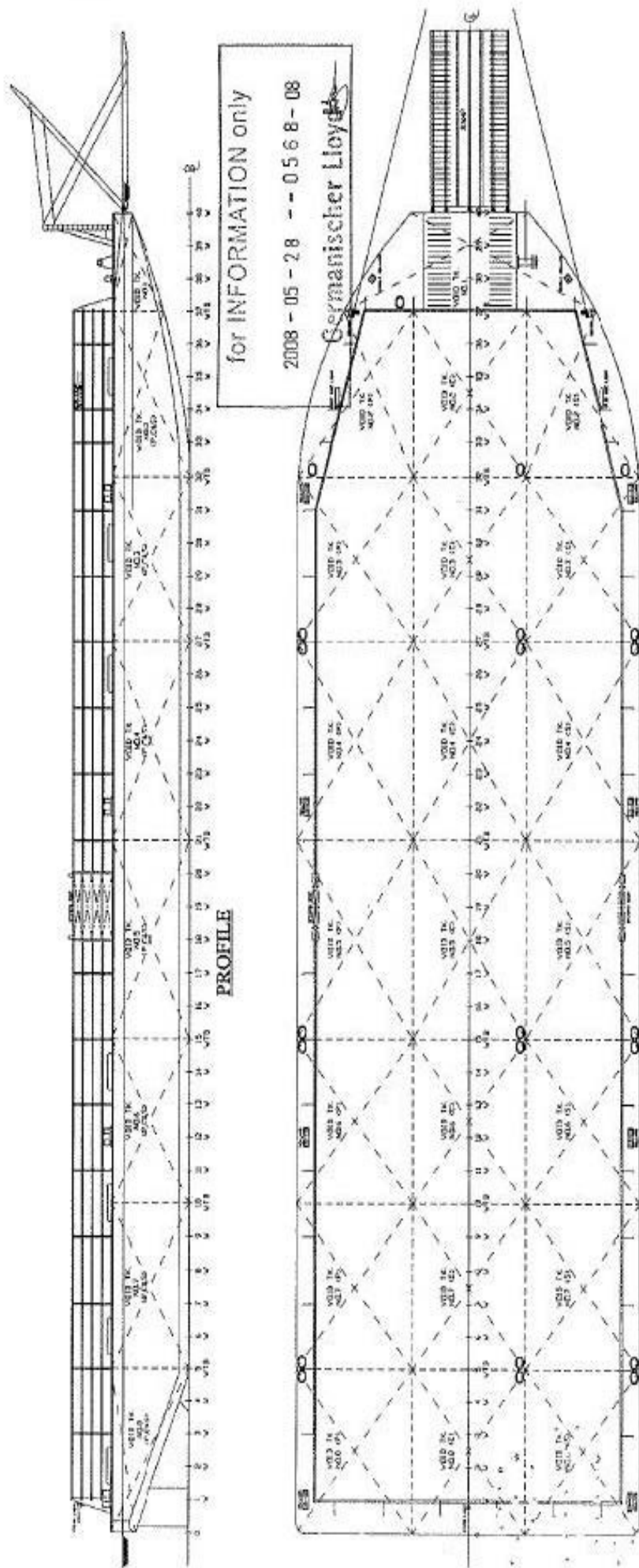
<b>VESEL INFORMATION</b>	
Flag / Port of Registry	Singapore
Builder	PT. Marco Polo Shipyard
Year Built	April 2008
Official No.	33926
Class	GL
Notation	100A5 Pontoon
<b>PRINCIPAL PARTICULARS</b>	
Length Overall	240' (73.15 M)
Breadth Moulded	70' (21.34 M)
Depth Moulded	16' (4.88M)
Draft ( Summer)	3.94M (Moulded)
GRT / NT	1833T
NT	550T
Deadweight	4749.2T
Light Ship weight	625.056T
Loaded Displacement	5374.222T
Side Board Height	2.45M
Deck Loading	7.5MT/M <sup>2</sup>
Ramp Door	Fitted

*Particulars believed to be correct but not guaranteed. All figures given are approximate only. Owners reserve the right to amend the specifications without notice.*

MARCO POLO MARINE LIMITED 66 Kallang Pudding Road Hor Kew Business Centre #05-01 Singapore 349324 Tel: 6741-2545 Fax: 66594612

Email: [ops.shipping@marcopolomarine.com.sg](mailto:ops.shipping@marcopolomarine.com.sg) [www.marcopolomarine.com.sg](http://www.marcopolomarine.com.sg)

1 2 3 4 5 6 7 8



PROFILE

MAIN DECK

PRINCIPAL PARTICULARS:-  
 LENGTH OVERALL, LDA - 240' (73.152 M)  
 BREADTH MLD, B - 70' (21.336 M)  
 DEPTH MLD, D - 16' (4.877 M)  
 DECK LEADING - 7.5 T/H<sup>2</sup>  
 FRAME SPACING - 6'-0" (1.8288 M)

DETAILS OF MODIFICATION		DRAWN	CHECKED	APPROVED	DATE
NOV	SHIP				
<p><b>240' X 70' X 16'</b> <b>DECK CARGO BARGE</b></p> <p><b>GENERAL ARRANGEMENT</b></p>		<p><b>TL DESIGN SERVICES</b>                      MAILING ADDRESS: S.L. O BRADSELL TECH 401-04                      LINDSEY B TON BENDS DISCOUNT STORED                      1-MAIL ADDRESS: tlad@tyl.com</p> <p>THIS DRAWING/DOCUMENT AND THE INFORMATION CONTAINED HEREIN ARE SUPPLIED ON THE UNDERSTANDING THAT THEY ARE THE PROPERTY OF TL DESIGN SERVICES. THEY MUST NOT BE USED OR REPRODUCED IN WHOLE OR IN PART WITHOUT PERMISSION IN WRITING.</p>			
OWNER	CLASS	DESIGNER	SCALE	DRAWING NO.	
SHIP	GERMANISCHER LLOYD (GL)	TL DESIGN SERVICES	1:225	TL-0402-08-H1	
DESIGNED BY	APPROVED	CHECKED	DATE	DRAWING DATE	
K.H. LOM				00	
22/04/2008				8	