



*challenging new frontiers  
a voyage beyond excellence*

## BINA MARINE 27 – 1200 HP



<b><u>VESSEL INFORMATION</u></b>		<b><u>PROPULSION SYSTEM</u></b>	
Flag / Port of Registry	Singapore	Main Engine	2 x Cummins KTA19M3,447kw@1800rpm
Builder	Tuong Aik Shipyard Sdn. Bhd, Sibul, Malaysia	Propulsion	Twin Screw / Fixed Pitch Propeller
Year Built	2008	<b><u>GENERATORS</u></b>	
Call Sign	9V7370	Main Genset Engine	2 x Yanmar 4TNE98-G1A 2 x 25KVA
Official No.	393451	Vessel Power supply	415V/220V/50HZ
IMO No.	9508562	<b><u>Deck Machinery</u></b>	
Class / Notation	GL / 100A5 MC	Towing Hook	15T with Quick Release Mechanism
<b><u>PRINCIPAL PARTICULARS</u></b>		Anchor Windlass	17.5MM Electric windlass c/w double gypsy and double drum
Length Overall	23.5 M	Anchor / Chain	2 X 360KG / L: 247.5m D: 17.5mm
Breadth Moulded	7.32 M	<b><u>NAVIGATION EQUIPMENT</u></b>	
Depth Moulded	3.2M	GPS	JRC MWZ-4570
Maximum Draft	2.7M	VHF	GME GX-600
GRT / NT	155T / 47T	SSB RADIO	JRC JSB-196
Deadweight	106T	Radar (24 NM)	JRC JMA 2343
Speed	10 Knots	Echo Sounder	JRC PILOT 500F
<b><u>TANK CAPACITIES</u></b>		Magnetic Compass	Daiko T-150B
Fuel Oil	104M <sup>3</sup>	<b><u>LSA</u></b>	
Fresh Water	25 M <sup>3</sup>	Life Raft	2 x 10 men

*Particulars believed to be correct but not guaranteed. All figures given are approximate only. Owners reserve the right to amend the specifications without notice.*

MARCO POLO MARINE LIMITED 66 Kallang Pudding Road Hor Kew Business Centre #05-01 Singapore 349324 Tel: 6741-2545 Fax: 66594612

Email: [ops.shipping@marcopolomarine.com.sg](mailto:ops.shipping@marcopolomarine.com.sg) [www.marcopolomarine.com.sg](http://www.marcopolomarine.com.sg)

**PRINCIPAL PARTICULARS**

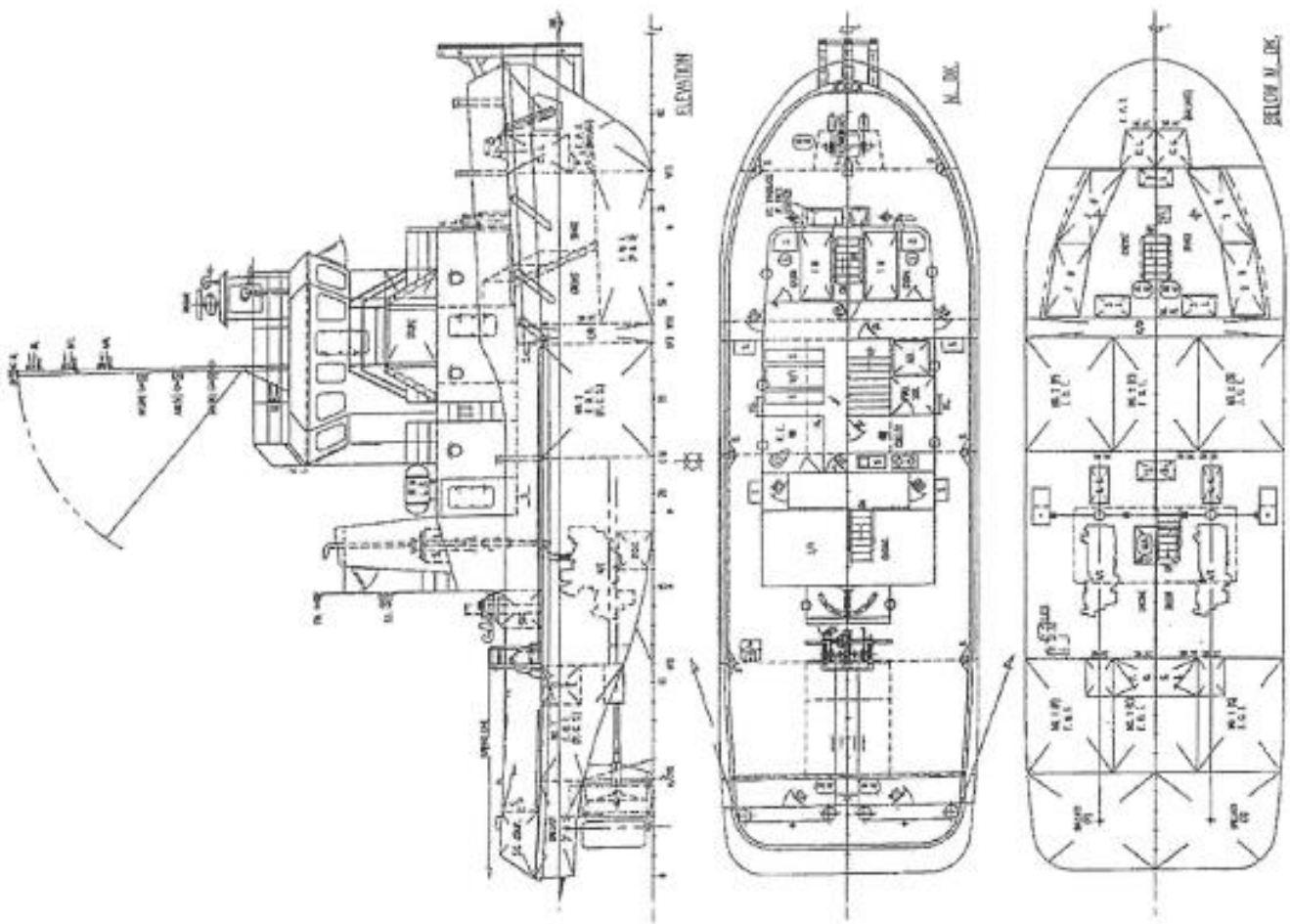
- L. O. A. > 23.50 M (77.08 FT)
- L. B. P. > 21.55 M (70.74 FT)
- BEAM MLD > 7.32 M (24.00 FT)
- DEPTH MLD > 5.23 M (17.19 FT)
- DESIGNED DRAFT > 2.79 M ( 9.16 FT)
- CREWS > 10 MEN
- FUEL OIL > 113.00<sup>M</sup> (1000 PALL)
- FRESH WATER > 24.00<sup>M</sup> (1000 PALL)
- BALLAST > 35.00<sup>M</sup> (1000 PALL)
- MAN ENGINE > 2 X CUMMINS KTA-19-H2
- 800 BHP / 1120 RPM EACH
- GEAR BOX > REDUCES NR 244, 5.03 : 1 RATIO
- GENERATOR > 7 X 22 KW
- SPEED > 12 KNOTS
- DESIGNED S. P. > 15 TONNES (APPROX)



NOTES  
 (1) DE. P.W. BOWEN I.O. AN. AG. SPEC. TO BE CARRIED BY INDESTRUCTIBLE MATERIAL.  
 (2) G. AN. THE DOOR 2/M SELF-CLOSING  
 (3) G. 10 B/L. CLOS. ON 4 DOOR BRIND ON BOY DE.

(N.B.) This drawing was approved with the remarks listed in the attached letter. (N.K. REG. No. - 10990957-769 B.S.P.)

This drawing and the information contained therein is prepared for the addressee only and is not to be used for any other purpose without the written consent of Wing Sang & Associates Sdn. Bhd. It is not to be used or reproduced in whole or in part without permission in writing.



NO.	REVISION	DATE	BY	CHK.
1				
2				
3				
4				
5				
6				
7				
8				
9				
10				
11				
12				
13				
14				
15				
16				
17				
18				
19				
20				
21				
22				
23				
24				
25				
26				
27				
28				
29				
30				
31				
32				
33				
34				
35				
36				
37				
38				
39				
40				
41				
42				
43				
44				
45				
46				
47				
48				
49				
50				
51				
52				
53				
54				
55				
56				
57				
58				
59				
60				
61				
62				
63				
64				
65				
66				
67				
68				
69				
70				
71				
72				
73				
74				
75				
76				
77				
78				
79				
80				
81				
82				
83				
84				
85				
86				
87				
88				
89				
90				
91				
92				
93				
94				
95				
96				
97				
98				
99				
100				

23M T. S. TUG  
 GENERAL ARRANGEMENT

NO.	REVISION	DATE	BY	CHK.
1				
2				
3				
4				
5				
6				
7				
8				
9				
10				
11				
12				
13				
14				
15				
16				
17				
18				
19				
20				
21				
22				
23				
24				
25				
26				
27				
28				
29				
30				
31				
32				
33				
34				
35				
36				
37				
38				
39				
40				
41				
42				
43				
44				
45				
46				
47				
48				
49				
50				
51				
52				
53				
54				
55				
56				
57				
58				
59				
60				
61				
62				
63				
64				
65				
66				
67				
68				
69				
70				
71				
72				
73				
74				
75				
76				
77				
78				
79				
80				
81				
82				
83				
84				
85				
86				
87				
88				
89				
90				
91				
92				
93				
94				
95				
96				
97				
98				
99				
100				